

ADA TRANSITION PLAN

GRANT COUNTY *Minnesota*

Prepared by



WidethSmithNolting.com

TABLE OF CONTENTS

Table of Contents.....	1
EXECUTIVE SUMMARY	4
Transition Plan Need and Purpose.....	4
Schedule.....	4
ADA Coordinator	5
Implementation Schedule.....	5
Methodology.....	5
Grievance Procedure	5
Progress Monitoring	5
Self-Evaluation Results.....	5
Schedule / Budget Information.....	6
Cost Information	6
Unit Prices	6
Improvement Cost	6
Entire Jurisdiction.....	6
Contact Information.....	6
ADA Title II Coordinator	6
Introduction	7
Transition Plan Need and Purpose.....	7
ADA and its Relationship to Other Laws	7
Agency Requirements	7
ADA Requirements.....	8
Pedestrian Routes	8
Curb Ramps	9
Self-Evaluation	10
Overview	10
Summary	10
Policies and Practices.....	11
Previous Practices	11
Policy	11

Improvement Schedule.....	11
External Agency Coordination	11
Schedule.....	11
ADA Coordinator.....	11
Implementation Schedule.....	12
Methodology.....	12
Public Outreach.....	12
Grievance Procedure	12
Progress Monitoring	12
Appendices.....	13
A. Self-Evaluation Results.....	13
B. Schedule / Budget Information.....	13
C. Public Outreach.....	13
D. Grievance Procedure.....	13
E. Contact Information.....	13
F. Agency ADA Design Standards and Procedures.....	13
G. Glossary of Terms.....	13
Appendix A – Self-Evaluation Results	14
Sidewalks.....	14
Curb Ramps.....	17
Appendix B – Schedule / Budget Information	22
Cost Information	22
Unit Prices	22
Improvement Cost	22
Entire Jurisdiction.....	22
Appendix C – Public Outreach.....	23
Appendix D – Grievance Procedure	24
Public Notice	24
Appendix E – Contact Information.....	27
ADA Title II Coordinator	27
Appendix F – Agency ADA Design Standards and Procedures.....	28
Design Procedures	28
Intersection Corners	28

Sidewalks / Trails.....	28
Other policies, practices and programs	28
Design Standards	28
Appendix G – Glossary of Terms	29
Appendix H – Rating Maps.....	31

EXECUTIVE SUMMARY

TRANSITION PLAN NEED AND PURPOSE

The Federal Highway Administration (FHWA) has enacted a requirement that all local agencies with greater than 50 employees or who are slated to receive federal funding included in the 2019-2022 Transportation Improvement Plan (TIP) must develop and adopt an ADA Transition Plan or be substantially working towards completion of the plan. If the local agency does not have their Transition Plan completed or in progress, the agency risks losing federal funding for transportation projects.

Each agency is required to complete a self-evaluation/survey of its facilities, policies and practices as it relates to the requirements set forth in The Americans with Disabilities Act (ADA). Repair or replacement of deficient facilities must be noted and addressed in a formal transition plan.

In the summer of 2016, Grant County conducted an inventory of pedestrian facilities within its public right of way consisting of the evaluation of the following facilities:

- 6.1 miles of sidewalks/trails
- 135 curb ramps
- 0 traffic control signals (by leg)
- 0 bus stops

Grant County evaluated their curb ramps on a 1-4 rating system to separate out various severities of non-compliance allowing the County to better prioritize ramp replacement.

Condition 1: Excellent

Condition 2: Good

Condition 3: Fair

Condition 4: Poor

Requests for accessibility improvements can be submitted to the County Engineer.

Many other agencies are responsible for pedestrian facilities within the jurisdiction of Grant County. The County will coordinate with those agencies to track and assist in the facilitation of the elimination of accessibility barriers along their routes.

SCHEDULE

Grant County has set the following schedule goals for improving the accessibility of its pedestrian facilities within the Grant County jurisdiction:

- After 20 years, not less than 90% of accessibility features within the jurisdiction of Grant County would be ADA compliant.

ADA COORDINATOR

The Agency has identified an ADA Title II Coordinator to oversee the Agency policies and procedures. Contact information can be found in Appendix E.

IMPLEMENTATION SCHEDULE

METHODOLOGY

Grant County schedules street improvement projects based on road conditions. At the time of these street improvements, all pedestrian facilities impacted are upgraded to current ADA accessibility standards.

If a specific need arises for a stand-alone ADA accessibility improvement project, these improvements will be made on a case by case basis as determined by the Grant County Board of Commissioners.

GRIEVANCE PROCEDURE

If users of the Agency facilities and services believe the Agency has not provided reasonable accommodation, they have the right to file a grievance.

The Agency has developed a grievance procedure for the purpose of the prompt and equitable resolution of citizens' complaints, concerns, comments, and other grievances. This grievance procedure is outlined in Appendix D.

PROGRESS MONITORING

The County's transition plan is a living document that will receive routine updates. Appendices will be updated every 5 years. Improvements due to new projects will be documented and this plan will be updated to reflect these changes. This Transition Plan is available to the public continually through the County's website.

SELF-EVALUATION RESULTS

This initial self-evaluation of pedestrian facilities yielded the following results:

- 43% of sidewalks/trails (by length) met accessibility criteria
- 32% of necessary curb ramp locations met accessibility criteria

SCHEDULE / BUDGET INFORMATION

COST INFORMATION

UNIT PRICES

Construction costs for upgrading facilities can vary depending on each individual improvement and conditions of each site. Costs can also vary on the type and size of project the improvements are associated with. Listed below are representative 2017 costs for some typical accessibility improvements based on if the improvements are included as part of a retrofit type project, or as part of a larger comprehensive capital improvement project.

Intersection corner ADA improvement retrofit: +/- \$3,000 per ramp

Sidewalk / Trail ADA improvement retrofit: +/- \$5.00 per SF

IMPROVEMENT COST

Sidewalk / Trail ADA improvement retrofit (SF):	\$460,500
Reconstruct 92 pedestrian ramps:	\$276,000
Total:	\$736,500

ENTIRE JURISDICTION

Based on the results of the self-evaluation, the estimated costs associated with providing ADA accessibility within the entire jurisdiction is \$736,500 regardless of responsible authority. A systematic approach to providing accessibility will be taken in order to absorb the cost into the County budget for improvements to the public right of way.

CONTACT INFORMATION

ADA TITLE II COORDINATOR

Name: Tracey Von Bargaen, PE

Title: Grant County Engineer

Address: 224 3rd St. SE

P.O. Box 1005

Elbow Lake, MN 56531

Phone: 218-685-8301

Fax: 218-685-5347

E-mail: tracey.vonbargaen@co.grant.mn.us

INTRODUCTION

TRANSITION PLAN NEED AND PURPOSE

The Americans with Disabilities Act (ADA), enacted on July 26, 1990, is a civil rights law prohibiting discrimination against individuals on the basis of disability. ADA consists of five titles outlining protections in the following areas:

1. Employment
2. State and local government services
3. Public accommodations
4. Telecommunications
5. Miscellaneous Provisions

Title II of ADA pertains to the programs, activities and services public entities provide. As a provider of public transportation services and programs, Grant County must comply with this section of the Act as it specifically applies to public service agencies. Title II of ADA provides that, “...no qualified individual with a disability shall, by reason of such disability, be excluded from participation in or be denied the benefits of the services, programs, or activities of a public entity, or be subjected to discrimination by any such entity.” ([42 USC. Sec. 12132](#); [28 CFR. Sec. 35.130](#))

As required by Title II of [ADA, 28 CFR. Part 35 Sec. 35.105 and Sec. 35.150](#), Grant County has conducted a self-evaluation of its facilities within public rights of way and has developed this Transition Plan detailing how the organization will ensure that all of those facilities are accessible to all individuals. This document serves as a supplement to Grant County’s existing Transition Plan covering buildings, services, programs and activities.

ADA AND ITS RELATIONSHIP TO OTHER LAWS

Title II of ADA is companion legislation to two previous federal statutes and regulations: the [Architectural Barriers Acts of 1968](#) and [Section 504 of the Rehabilitation Act](#) of 1973.

The Architectural Barriers Act of 1968 is a Federal law that requires facilities designed, built, altered or leased with Federal funds to be accessible. The Architectural Barriers Act marks one of the first efforts to ensure access to the built environment.

Section 504 of the Rehabilitation Act of 1973 is a Federal law that protects qualified individuals from discrimination based on their disability. The nondiscrimination requirements of the law apply to employers and organizations that receive financial assistance from any Federal department or agency. Title II of ADA extended this coverage to all state and local government entities, regardless of whether they receive federal funding or not.

AGENCY REQUIREMENTS

Under Title II, Grant County must meet these general requirements:

- Must operate their programs so that, when viewed in their entirety, the programs are accessible to and useable by individuals with disabilities ([28 C.F.R. Sec. 35.150](#)).
- May not refuse to allow a person with a disability to participate in a service, program or activity simply because the person has a disability ([28 C.F.R. Sec. 35.130 \(a\)](#)).

- Must make reasonable modifications in policies, practices and procedures that deny equal access to individuals with disabilities unless a fundamental alteration in the program would result ([28 C.F.R. Sec. 35.130\(b\) \(7\)](#)).
- May not provide services or benefits to individuals with disabilities through programs that are separate or different unless the separate or different measures are necessary to ensure that benefits and services are equally effective ([28 C.F.R. Sec. 35.130\(b\)\(iv\) & \(d\)](#)).
- Must take appropriate steps to ensure that communications with applicants, participants and members of the public with disabilities are as effective as communications with others ([29 C.F.R. Sec. 35.160\(a\)](#)).
- Must designate at least one responsible employee to coordinate ADA compliance [[28 CFR Sec. 35.107\(a\)](#)]. This person is often referred to as the "ADA Coordinator." The public entity must provide the ADA coordinator's name, office address, and telephone number to all interested individuals [[28 CFR Sec. 35.107\(a\)](#)].
- Must provide notice of ADA requirements. All public entities, regardless of size, must provide information about the rights and protections of Title II to applicants, participants, beneficiaries, employees, and other interested persons [[28 CFR Sec. 35,106](#)]. The notice must include the identification of the employee serving as the ADA coordinator and must provide this information on an ongoing basis [[28 CFR Sec. 104.8\(a\)](#)].
- Must establish a grievance procedure. Public entities must adopt and publish grievance procedures providing for prompt and equitable resolution of complaints [[28 CFR Sec. 35.107\(b\)](#)]. This requirement provides for a timely resolution of all problems or conflicts related to ADA compliance before they escalate to litigation and/or the federal complaint process.

This document has been created to specifically cover accessibility within the public rights of way and does not include information on Grant County programs, practices, or building facilities not related to public rights of way.

ADA REQUIREMENTS

According to the 2010 ADA Standards for Accessible Design and the 2011 Proposed Guidelines for Pedestrian Facilities in the Public Right-of-Way (PROWAG) the following key design elements are required:

PEDESTRIAN ROUTES

- Access ways must be continuous with interconnected walkways, sidewalks, curb ramps, landings and crosswalks.
- Routes shall be firm, stable and slip resistant.
- Access ways shall have a 48" minimum clear width.
- If there is less than 5 feet clear width, there must be passing spaces dimensioned 5 feet by 5 feet minimum at least every 200 feet.
- Maximum 5% running slope (parallel to direction of travel) and 2% cross slope (perpendicular to direction of travel).
- Vertical discontinuities must be no more than ¼ inch.
- Horizontal openings in gratings and joints shall not permit passage of a sphere more than 13 mm (0.5 in) in diameter.

- Elongated openings in gratings shall be placed so that the long dimension is perpendicular to the dominant direction of travel.

CURB RAMPS

- Generally, curb ramps must be provided wherever a sidewalk or other pedestrian walkway crosses a curb.
- The ramp has the least running slope possible but must be 8.33% or less.
- The cross slope may not exceed 2%.
- The ramp must be at least 48 inches wide, not including the flared sides.
- The ramp must have detectable warnings at least 24 inches deep that extend the full width of the ramp.
 - Detectable warnings consist of a series of small domes that contrast in color with the surrounding sidewalk or street.
- Transitions from the ramp to the walkway, gutter and street must be flush and free of abrupt changes.
- Grade breaks at the top and bottom of curb ramp runs shall be perpendicular to the direction of the ramp run. Grade breaks shall not be permitted on the surface of ramp runs and turning spaces. Surface slopes that meet at grade breaks shall be flush.
- The gutter must have a slope of no more than 5 percent toward the ramp.
- Landing dimensions must be a minimum of 4 feet by 4 feet.
- Gratings, access covers, and other appurtenances shall not be located on curb ramps, landings or gutters.

SELF-EVALUATION

OVERVIEW

Grant County is required, under Title II of the Americans with Disabilities Act (ADA) and 28CFR35.105, to perform a self-evaluation of its current transportation infrastructure policies, practices, and programs. This self-evaluation will identify what policies and practices impact accessibility and examine how the County implements these policies. The goal of the self-evaluation is to verify that, in implementing the County's policies and practices, the department is providing accessibility and not adversely affecting the full participation of individuals with disabilities.

The self-evaluation also examines the condition of the County's Pedestrian Circulation Route/Pedestrian Access Route) (PCR/PAR) and identifies potential need for PCR/PAR infrastructure improvements. This will include the sidewalks, curb ramps, bicycle/pedestrian trails, traffic control signals and transit facilities that are located within the County rights of way. Any barriers to accessibility identified in the self-evaluation and the remedy to the identified barrier are set out in this transition plan.

SUMMARY

In the summer of 2016, Grant County conducted an inventory of pedestrian facilities within its public right of way consisting of the evaluation of the following facilities:

- 6.1 miles of sidewalks/trails
- 135 curb ramps
- 0 traffic control signals (by leg)
- 0 bus stops

A detailed evaluation on how these facilities relate to ADA standards is found in Appendix A and will be updated periodically.

POLICIES AND PRACTICES

PREVIOUS PRACTICES

Since the adoption of the ADA, Grant County has striven to provide accessible pedestrian features as part of the County's capital improvement projects. As additional information was made available as to the methods of providing accessible pedestrian features, the County updated their procedures to accommodate these methods.

POLICY

Grant County's goal is to continue to provide accessible pedestrian design features as part of the County capital improvement projects. The County has established ADA design standards and procedures as listed in Appendix F. These standards and procedures will be kept up to date with nationwide and local best management practices.

The County will consider and respond to all accessibility improvement requests. All accessibility improvements that have been deemed reasonable will be scheduled consistent with transportation priorities. The County will coordinate with external agencies to ensure that all new or altered pedestrian facilities within the County jurisdiction are ADA compliant to the maximum extent feasible.

Maintenance of pedestrian facilities within the public right of way will continue to follow the policies set forth by the County. Pedestrian facilities are entirely maintained by the cities in which they reside.

Requests for accessibility improvements can be submitted to the ADA Coordinator. Contact information for the ADA Coordinator is located in Appendix E.

IMPROVEMENT SCHEDULE

EXTERNAL AGENCY COORDINATION

Many other agencies are responsible for pedestrian facilities within the jurisdiction of Grant County. The County will coordinate with those agencies to track and assist in the facilitation of the elimination of accessibility barriers along their routes.

SCHEDULE

Grant County has set the following schedule goals for improving the accessibility of its pedestrian facilities within the County jurisdiction:

- After 20 years, not less than 90% of accessibility features within the jurisdiction of Grant County would be ADA compliant.

ADA COORDINATOR

In accordance with 28 CFR 35.107(a), Grant County has identified an ADA Title II Coordinator to oversee the County policies and procedures. Contact information for this individual is located in Appendix E.

IMPLEMENTATION SCHEDULE

METHODOLOGY

Grant County schedules street improvement projects based on road conditions. At the time of these street improvements, all pedestrian facilities impacted are upgraded to current ADA accessibility standards. Norcross and Herman have improvement projects scheduled for 2021.

If a specific need arises for a stand-alone ADA accessibility improvement project, these improvements will be made on a case by case basis as determined by the Grant County Board of Commissioners.

PUBLIC OUTREACH

Grant County recognizes that public participation is an important component in the development of this document.

Public outreach for the creation of this document consisted of the following activities:

A notice stating the availability of this report was published in the local newspaper.

This document was made available for public comment. A summary of comments received and detailed information regarding the public outreach activities are located in Appendix C.

GRIEVANCE PROCEDURE

Under the Americans with Disabilities Act, each agency is required to publish its responsibilities in regards to the ADA. A draft of this public notice is provided in Appendix D. If users of Grant County facilities and services believe the County has not provided reasonable accommodation, they have the right to file a grievance.

In accordance with 28 CFR 35.107(b), the County has developed a grievance procedure for the purpose of the prompt and equitable resolution of citizens' complaints, concerns, comments, and other grievances. This grievance procedure is outlined in Appendix D.

PROGRESS MONITORING

The County's transition plan is a living document that will receive routine updates. Appendices will be updated every 5 years. Improvements due to new projects will be documented and this plan will be updated to reflect these changes. This Transition Plan is available to the public continually through the County's website.

APPENDICES

- A. SELF-EVALUATION RESULTS
- B. SCHEDULE / BUDGET INFORMATION
- C. PUBLIC OUTREACH
- D. GRIEVANCE PROCEDURE
- E. CONTACT INFORMATION
- F. AGENCY ADA DESIGN STANDARDS AND PROCEDURES
- G. GLOSSARY OF TERMS

APPENDIX A – SELF-EVALUATION RESULTS

This initial self-evaluation of pedestrian facilities yielded the following results:

- 43% of sidewalks/trails (by length) met accessibility criteria
- 32% of necessary curb ramp locations met accessibility criteria
- Curb Ramp Ratings
 - Condition 1: Excellent
 - Condition 2: Good
 - Condition 3: Fair
 - Condition 4: Poor

SIDEWALKS

Site ID	City	Road Name	From	To	Road Side	Compliance	Length (ft)
Sw_001	Ashby	CSAH 4	West End of School	Birch Ave	N	Yes	313
Sw_002	Ashby	CSAH 4	Birch Ave	Alley	N	Yes	195
Sw_003	Ashby	CSAH 4	West End of School	Parking Lot Drwy	S	No	184
Sw_004	Ashby	CSAH 4	Parking Lot Drwy	Birch Ave	S	No	94
Sw_005	Ashby	CSAH 4	Birch Ave	Cedar Ave	S	Yes	312
Sw_006	Ashby	CSAH 10	Battle Ave	Oak St	W	No	680
Sw_007	Ashby	CSAH 10	Battle Ave	Nelson Ave	E	No	1574
Sw_008	Ashby	CSAH 10	Nelson Ave	CSAH 82	E	No	269
Sw_009	Ashby	CSAH 10	Oak St	Nelson Ave	W	No	822
Sw_010	Ashby	CSAH 10	Nelson Ave	CSAH 82	W	No	308
Sw_011	Ashby	CSAH 82	Main St	Melby Ave	S	Yes	351
Sw_013	Ashby	CSAH 82	Larson St	Norge St	N	Yes	382
Sw_014	Ashby	CSAH 82	Cedar Ave	Larson St	N	Yes	338
Sw_050	Ashby	CSAH 82	Birch Ave	Norge St	E	Yes	132
Sw_051	Ashby	CSAH 82	Norge St	Cedar Ave	N	Yes	270
Sw_054	Ashby	CSAH 82	Melby Ave	Nelson Ave	S	Yes	538
Sw_055	Ashby	CSAH 82	Nelson Ave	CSAH 10	S	Yes	572
Sw_056	Ashby	CSAH 82	Midblock CSAH 4	Larson St	S	Yes	96
Sw_057	Ashby	CSAH 82/CSAH4	CSAH 4	Midblock CSAH 4/Larson	S	No	270
Total							7700

Site ID	City	Road Name	From	To	Road Side	Compliance	Length (ft)
Sw_022	Barrett	CSAH 2	Church St	2nd St	N	No	668
Sw_023	Barrett	CSAH 2	Park St	2nd St	S	No	129
Sw_024	Barrett	CSAH 2	2nd St	1st Ave	S	No	157
Sw_025	Barrett	CSAH 2	Railroad	Fairview St	S	No	790
Sw_026	Barrett	CSAH 2	Fairview St	River St	S	No	153
Sw_027	Barrett	CSAH 2	Front St	1st St	N	No	236
Sw_042	Barrett	CSAH 2	2nd St	1st Ave	N	No	185
Total							2318

ADA Transition Plan – November 2019

Site ID	City	Road Name	From	To	Road Side	Compliance	Length (ft)
Sw_028	Elbow Lake	CSAH 1	2nd Ave NW	1st Ave NW	N	No	354
Sw_029	Elbow Lake	CSAH 1	2nd Ave SW	Alley mid-block	S	No	163
Sw_030	Elbow Lake	CSAH 1	1st Ave NW	Central Ave	N	No	340
Sw_031	Elbow Lake	CSAH 1	1st Ave SW	Central Ave	S	No	344
Sw_043	Elbow Lake	CSAH 1	3rd Ave SW	2nd Ave SW	S	No	764
Sw_044	Elbow Lake	CSAH 1	3rd Ave SW	2nd Ave NW	N	No	668
Total							2633

Site ID	City	Road Name	From	To	Road Side	Compliance	Length (ft)
Sw_036	Herman	County 33	Wells St E	Parking Lot	W	No	136
Sw_037	Herman	County 33	1st St E	2nd St E	E	No	336
Sw_038	Herman	County 33	2nd St E	3rd St E	E	No	326
Sw_039	Herman	County 33	3rd St E	4th St E	E	No	323
Sw_040	Herman	County 33	4th St E	5th St E	E	No	319
Sw_041	Herman	County 33	4th St E	5th St E	W	No	324
Total							1764

Site ID	City	Road Name	From	To	Road Side	Compliance	Length (ft)
Sw_032	Hoffman	CSAH 5	3rd St S	Arkansas Ave	E	No	399
Sw_033	Hoffman	CSAH 5	Arakansas Ave	Main Ave W	E	No	332
Sw_034	Hoffman	CSAH 5	Main Ave W	Alaska Ave	E	No	326
Sw_035	Hoffman	CSAH 5	Alaska Ave	Dakota Ave	E	No	808
Sw_58	Hoffman	CSAH 5	CSAH 5	Park Entrance	W	Yes	735
Sw_59	Hoffman	CSAH 5	Dakota Ave	Montana Ave	E	Yes	1698
Sw_60	Hoffman	CSAH 5	160th St	165th St	E	Yes	3347
Sw_61	Hoffman	CSAH 5	165th St	CSAH 5	E	Yes	435
Sw_62	Hoffman	CSAH 5	200' W of trailhead	Trailhead	W	No	200
Sw_63	Hoffman	CSAH 5	Montana Ave	160th St	E	Yes	3985
Sw_64	Hoffman	CSAH 5	Park Entrance	200' W of trailhead	W	Yes	188
Total							12453

Site ID	City	Road Name	From	To	Road Side	Compliance	Length (ft)
Sw_045	Norcross	CSAH 8	Railroad St	Railroad	E	No	139
Sw_046	Norcross	CSAH 8	Railroad	Bullis St	E	No	270
Sw_047	Norcross	CSAH 8	Bullis St	Smith St	E	No	341
Sw_048	Norcross	CSAH 8	Railroad	Clara St	W	No	1884
Total							2634

ADA Transition Plan – November 2019

Site ID	City	Road Name	From	To	Road Side	Compliance	Length (ft)
Sw_015	Wendell	CSAH 11	646 State Hwy 55	Minnesota Ave	W	No	365
Sw_016	Wendell	CSAH 11	Minnesota Ave	Railway Ave	W	No	435
Sw_017	Wendell	CSAH 11	Railway Ave	Torrison Ave	W	No	290
Sw_018	Wendell	CSAH 11	Torrison Ave	695 Co Rd 11	W	No	752
Sw_019	Wendell	CSAH 11	Minnesota Ave	Soo Ave	E	No	610
Sw_020	Wendell	CSAH 11	Soo Ave	Torrison Ave	E	No	249
Sw_021	Wendell	CSAH 11	Torrison Ave	North Driveway	E	No	104
Total							2805

CURB RAMPS

Site ID	City	Intersection	Condition	Compliance
CR_001	Ashby	csah 4(20) \cedar ave-2	2	No
CR_002	Ashby	csah 4(20)\ birch ave-6	2	No
CR_003	Ashby	csah 4(20)\ birch ave-5	2	No
CR_004	Ashby	csah 4(20)\ birch ave-1	2	No
CR_005	Ashby	csah 4(20)\ashby school-1	2	No
CR_006	Ashby	csah 10 \ nelson st-2	2	No
CR_017	Ashby	csah 10 \ oak st-1	2	No
CR_025	Ashby	csah 4(20)\ birch ave-4	2	No
CR_026	Ashby	csah 4(20)\ashby school-2	2	No
CR_027	Ashby	csah 10-1	2	No
CR_034	Ashby	csah 4(20) \cedar ave-1	2	No
CR_035	Ashby	csah 4(20)\ birch ave-7	2	No
CR_036	Ashby	csah 10 \ nelson st-1	2	No
CR_044	Ashby	csah 4(20) \cedar ave-3	2	No
CR_045	Ashby	csah 4(20) \cedar ave-1	2	No
CR_046	Ashby	csah 4(20)\ birch ave-3	2	No
CR_047	Ashby	csah 10 \ nelson st-4	2	No
CR_054	Ashby	csah 4(20)\ birch ave-8	2	No
CR_055	Ashby	csah 10\ battle st-2	2	No
CR_056	Ashby	csah 10\ battle st-1	2	No
CR_064	Ashby	csah 4(20)\ birch ave-2	2	No
CR_065	Ashby	csah 10 \ nelson st-3	2	No
CR_066	Ashby	csah 10-2	2	No
CR_067	Ashby	csah 10 \ oak st-2	2	No
CR_079	Ashby	csah 4(20) -1	2	No
CR_086	Ashby	CSAH 82/Birch Ave	1	Yes
CR_087	Ashby	Norge St/CSAH 82	2	No
CR_088	Ashby	Birch Ave/Norge St	1	Yes
CR_089	Ashby	CSAH 82/Birch Ave.	1	Yes
CR_090	Ashby	Birch Ave/Norge St	2	No
CR_091	Ashby	CSAH 82/Birch Ave/Norge	1	Yes
CR_092	Ashby	Norge St/CSAH 82	1	Yes
CR_093	Ashby	Cedar Ave/CSAH 82	1	Yes
CR_094	Ashby	Cedar Ave/CSAH 82	1	Yes
CR_095	Ashby	CSAH 82/Cedar Ave	1	Yes
CR_096	Ashby	CSAH 82/Cedar Ave	1	Yes
CR_097	Ashby	CSAH 82/Larson Ave	1	Yes
CR_098	Ashby	CSAH 82/Larson Ave	1	Yes
CR_099	Ashby	Larson Ave/CSAH 82	1	Yes
CR_100	Ashby	Larson Ave/CSAH 82	1	Yes

Site ID	City	Intersection	Condition	Compliance
CR_101	Ashby	CSAH 82/Larson Ave	1	Yes
CR_102	Ashby	CSAH 82/Larson Ave	1	Yes
CR_103	Ashby	Larson Ave/CSAH 82	1	Yes
CR_104	Ashby	Larson Ave/CSAH 82	1	Yes
CR_105	Ashby	CSAH 82/Larson/Norge	1	Yes
CR_106	Ashby	CSAH 82/Larson/Melby	1	Yes
CR_107	Ashby	CSAH 82/Melby Ave	1	Yes
CR_108	Ashby	CSAH 82/ Melby Ave	1	Yes
CR_109	Ashby	CSAH 82/ Melby Ave	1	Yes
CR_110	Ashby	CSAH 82/Nelson Ave	1	Yes
CR_111	Ashby	CSAH 82/Nelson Ave	1	Yes
CR_112	Ashby	CSAH 82/CSAH 10	1	Yes
CR_113	Ashby	CSAH 82/CSAH 10	1	Yes

Site ID	City	Intersection	Condition	Compliance
CR_012	Barrett	csah 2 \hwy 55 E-2	3	No
CR_013	Barrett	csah 2 \1st st-2	2	No
CR_014	Barrett	csah 2 \fairview st-2	2	No
CR_021	Barrett	csah 2 \hwy 55 E-1	3	No
CR_022	Barrett	csah 2 \1st st-1	2	No
CR_029	Barrett	csah 2 \ park st-1	3	No
CR_031	Barrett	csah 2 \church st-1	2	No
CR_041	Barrett	csah 2 \hwy 55 E-4	3	No
CR_042	Barrett	csah 2 \dayle ray blvd-2	2	No
CR_050	Barrett	csah 2 \ park st-2	2	No
CR_060	Barrett	csah 2 \MN ave(soo lane)-1	3	No
CR_076	Barrett	csah 2 \hwy 55 E-3	2	No
CR_077	Barrett	csah 2 \dayle ray blvd-1	2	No
CR_078	Barrett	csah 2 \fairview st-1	2	No

ADA Transition Plan – November 2019

Site ID	City	Intersection	Condition	Compliance
CR_084	Elbow Lake	CSAH 1/Central Ave	3	No
CR_085	Elbow Lake	CSAH 1/Central Ave	3	No
CR_114	Elbow Lake	CSAH 1/1st Ave	2	No
CR_115	Elbow Lake	CSAH 1/1st Ave	2	No
CR_116	Elbow Lake	CSAH 1/1st Ave	2	No
CR_117	Elbow Lake	CSAH 1/2nd Ave	2	No
CR_118	Elbow Lake	CSAH 1/2nd Ave	2	No
CR_119	Elbow Lake	CSAH 1/ 2nd Ave	2	No
CR_120	Elbow Lake	CSAH 1/ 2nd Ave	2	No
CR_133	Elbow Lake	CSAH 1/ 1st Ave	2	No
CR_134	Elbow Lake	CSAH 1/ 3rd Ave	2	No
CR_135	Elbow Lake	CSAH 1/ 3rd Ave	2	No

Site ID	City	Intersection	Condition	Compliance
CR_009	Herman	Co. Rd 33\ 3rd st -6	4	No
CR_010	Herman	Co. Rd 33\ 3rd st -4	4	No
CR_015	Herman	Co. Rd 33\4th st-6	2	No
CR_016	Herman	Co. Rd 33\ 4th ave -3	3	No
CR_019	Herman	Co. Rd 33 / 3rd st-2	4	No
CR_023	Herman	Co. Rd 33\2nd-1	2	No
CR_024	Herman	Co. Rd 33/5th st E-2	2	No
CR_032	Herman	Co. Rd 33\1st st-1	4	No
CR_049	Herman	Co. Rd 33/ 3rd st-1	4	No
CR_051	Herman	Co. Rd 33\2nd-2	3	No
CR_052	Herman	Co. Rd 33\ 4th ave -4	4	No
CR_053	Herman	Co. Rd 33\ 4th ave -1	4	No
CR_061	Herman	Co. Rd 33\4th st-5	3	No
CR_062	Herman	Co. Rd 33\ 4th ave -2	4	No
CR_063	Herman	Co. Rd 33/5th st E-1	2	No
CR_072	Herman	Co. Rd 33\ 3rd st -5	4	No
CR_082	Herman	Co. Rd 33\ 3rd st -3	4	No

Site ID	City	Intersection	Condition	Compliance
CR_011	Hoffman	csah 5\main av -1	2	No
CR_020	Hoffman	csah 5-1	3	No
CR_030	Hoffman	csah 5\alaska av-2	3	No
CR_039	Hoffman	csah 5\hwt 27 E-1	3	No
CR_040	Hoffman	csah 5\arkansas av-1	3	No
CR_073	Hoffman	csah 5\main av -2	3	No
CR_074	Hoffman	csah 5\arkansas av-2	2	No
CR_075	Hoffman	csah 5\3rd st S-1	2	No
CR_083	Hoffman	csah 5\alaska av-1	3	No
CR_121	Hoffman	Elk Lake Trail/Dakota Ave	1	Yes
CR_122	Hoffman	Elk Lake Trail/Montana Ave	1	Yes
CR_123	Hoffman	Elk Lake Trail/Montana Ave	2	No
CR_124	Hoffman	Elk Lake Trail/160th St	2	No
CR_125	Hoffman	Elk Lake Trail/160th St	1	Yes
CR_126	Hoffman	Elk Lake Trail/165th St	1	Yes
CR_127	Hoffman	Elk Lake Trail/CSAH 5	1	Yes
CR_128	Hoffman	Elk Lake Trail/CSAH 5	1	Yes
CR_129	Hoffman	Elk Lake Trail/Park Entry	1	Yes
CR_130	Hoffman	Elk Lake Trail/Park Entry	1	Yes
CR_131	Hoffman	Elk Lake Trail/Trailhead	2	No
CR_132	Hoffman	Elk Lake Trail/165th St	2	No

Site ID	City	Intersection	Condition	Compliance
CR_033	Norcross	csah 8/bullis st-1	3	No
CR_043	Norcross	csah 8/bullis st-2	3	No

ADA Transition Plan – November 2019

Site ID	City	Intersection	Condition	Compliance
CR_007	Wendell	csah 11. \ soo ave-1	2	No
CR_008	Wendell	csah 11\ torrisson ave-5	1	No
CR_018	Wendell	csah 11 \ railway ave-2	2	No
CR_028	Wendell	csah 11 \ railway ave-1	2	No
CR_037	Wendell	csah 11 \ minnesota ave-1	2	No
CR_038	Wendell	csah 11\ torrisson ave-2	1	No
CR_048	Wendell	csah 11 \ minnesota ave-2	2	No
CR_057	Wendell	csah 11 \ minnesota ave-4	1	No
CR_058	Wendell	csah 11-1	2	No
CR_059	Wendell	csah 11\ torrisson ave-6	1	No
CR_068	Wendell	csah 11. \ soo ave-2	2	No
CR_069	Wendell	csah 11 \ minnesota ave-3	1	No
CR_070	Wendell	csah 11\ torrisson ave-7	1	Yes
CR_071	Wendell	csah 11\ torrisson ave-3	1	No
CR_080	Wendell	csah 11\ torrisson ave-4	1	No
CR_081	Wendell	csah 11\ torrisson ave-1	1	No

APPENDIX B – SCHEDULE / BUDGET INFORMATION

COST INFORMATION

UNIT PRICES

Construction costs for upgrading facilities can vary depending on each individual improvement and conditions of each site. Costs can also vary on the type and size of project the improvements are associated with. Listed below are representative 2017 costs for some typical accessibility improvements based on if the improvements are included as part of a retrofit type project, or as part of a larger comprehensive capital improvement project.

Intersection corner ADA improvement retrofit: +/- \$3,000 per ramp

Sidewalk / Trail ADA improvement retrofit: +/- \$5.00 per SF

IMPROVEMENT COST

Sidewalk / Trail ADA improvement retrofit (SF):	\$460,500
Reconstruct 92 pedestrian ramps:	\$276,000
Total:	\$736,500

ENTIRE JURISDICTION

Based on the results of the self-evaluation, the estimate costs associated with providing ADA accessibility within the entire jurisdiction is \$736,500. A systematic approach to providing accessibility will be taken in order to absorb the cost into the Grant County budget for improvements to the public right of way.

APPENDIX C – PUBLIC OUTREACH

A notice stating the availability of this report was published in the local newspaper and this document was made available for public comment. No comments were received.

APPENDIX D – GRIEVANCE PROCEDURE

As part of the ADA requirements the County has posted the following notice outlining its ADA requirements:

PUBLIC NOTICE

In accordance with the requirements of title II of the Americans with Disabilities Act of 1990, Grant County will not discriminate against qualified individuals with disabilities on the basis of disability in County's services, programs, or activities.

Employment: The County does not discriminate on the basis of disability in its hiring or employment practices and complies with all regulations promulgated by the U.S. Equal Employment Opportunity Commission under title I of the Americans with Disabilities Act (ADA).

Effective Communication: The County will generally, upon request, provide appropriate aids and services leading to effective communication for qualified persons with disabilities so they can participate equally in the County's programs, services, and activities, including qualified sign language interpreters, documents in Braille, and other ways of making information and communications accessible to people who have speech, hearing, or vision impairments.

Modifications to Policies and Procedures: The County will make all reasonable modifications to policies and programs to ensure that people with disabilities have an equal opportunity to enjoy all County programs, services, and activities. For example, individuals with service animals are welcomed in County offices, even where pets are generally prohibited.

Anyone who requires an auxiliary aid or service for effective communication, or a modification of policies or procedures to participate in a County program, service, or activity, should contact the office of the ADA Coordinator, as soon as possible but no later than 48 hours before the scheduled event.

The ADA does not require the County to take any action that would fundamentally alter the nature of its programs or services, or impose an undue financial or administrative burden.

The County will not place a surcharge on a particular individual with a disability or any group of individuals with disabilities to cover the cost of providing auxiliary aids/services or reasonable modifications of policy, such as retrieving items from locations that are open to the public but are not accessible to persons who use wheelchairs.

**Grant County, MN
Grievance Procedure under
the Americans with Disabilities Act**

This Grievance Procedure is established to meet the requirements of the Americans with Disabilities Act of 1990 ("ADA"). It may be used by anyone who wishes to file a complaint alleging discrimination on the basis of disability in the provision of services, activities, programs, or benefits by Grant County. The County's Personnel Policy governs employment-related complaints of disability discrimination.

The complaint should be in writing and contain information about the alleged discrimination such as name, address, phone number of complainant and location, date, and description of the problem. Alternative means of filing complaints, such as personal interviews or a tape recording of the complaint, will be made available for persons with disabilities upon request.

The complaint should be submitted by the grievant and/or his/her designee as soon as possible but no later than 60 calendar days after the alleged violation to:

**Tracey Von Barga, PE
ADA Coordinator and Grant County Engineer
224 3rd St. SE
P.O. Box 1005
Elbow Lake, MN 56531**

The County will acknowledge receipt of the grievance to the complainant within 15 working days of its submittal. The County will also provide to the complainant within 15 working days of its submittal; 1) a response or resolution to the grievance or; 2) information on when the complainant can expect a response or resolution to the grievance.

If the grievance filed does not concern a Grant County facility, the County will work with the complainant to contact the agency that has jurisdiction.

Within 60 calendar days of receipt, a Grant County staff person will conduct an investigation necessary to determine the validity of the alleged violation. As a part of the investigation, the staff person would conduct an engineering study to help determine the County's response. The staff person will take advantage of department resources and use engineering judgment, data collected, and any information submitted by the resident to develop a conclusion. A staff person will be available to meet with the complainant to discuss the matter as a part of the investigation and resolution of the matter. The County will document each resolution of a filed grievance and retain such documentation in the department's ADA Grievance File for a period of seven years.

The County will consider all specific grievances within its particular context or setting. Furthermore, the County will consider many varying circumstances including: 1) the nature of the access to services, programs, or facilities at issue; 2) the specific nature of the disability; 3) the essential eligibility requirements for participation; 4) the health and safety of others; and 5) the degree to which an accommodation would constitute a fundamental alteration to the program, service, or facility, or cause an undue hardship to Grant County.

ADA Transition Plan – November 2019

Accordingly, the resolution by Grant County of any one grievance does not constitute a precedent upon which the county is bound or upon which other complaining parties may rely.

File Maintenance

The County shall maintain ADA grievance files for a period of seven years.

Complaints of Title II violations may also be filed with the DOJ within 180 days of the date of discrimination. In certain situations, cases may be referred to a mediation program sponsored by the Department of Justice (DOJ). The DOJ may bring a lawsuit where it has investigated a matter and has been unable to resolve violations.

For more information, contact:

U.S. Department of Justice
Civil Rights Division
950 Pennsylvania Avenue, N.W.
Disability Rights Section - NYAV
Washington, D.C. 20530
www.ada.gov
(800) 514-0301 (voice – toll free)
(800) 514-0383 (TTY)

Title II may also be enforced through private lawsuits in Federal court. It is not necessary to file a complaint with the DOJ or any other Federal agency, or to receive a "right-to-sue" letter, before going to court.

APPENDIX E – CONTACT INFORMATION

ADA TITLE II COORDINATOR

Name: Tracey Von Bargaen, PE

Title: Grant County Engineer

Address: 224 3rd St. SE

P.O. Box 1005

Elbow Lake, MN 56531

Phone: 218-685-8301

Fax: 218-685-5347

E-mail: tracey.vonbargaen@co.grant.mn.us

APPENDIX F – AGENCY ADA DESIGN STANDARDS AND PROCEDURES

DESIGN PROCEDURES

INTERSECTION CORNERS

Curb ramps or blended transitions will attempt to be constructed or upgraded to achieve compliance within all capital improvement projects. There may be limitations which make it technically infeasible for an intersection corner to achieve full accessibility within the scope of any project. Those limitations will be noted and those intersection corners will remain on the transition plan. As future projects or opportunities arise, those intersection corners shall continue to be incorporated into future work. Regardless on if full compliance can be achieved or not, each intersection corner shall be made as compliant as possible in accordance with the judgment of County staff.

SIDEWALKS / TRAILS

Sidewalks and trails will attempt to be constructed or upgraded to achieve compliance within all capital improvement projects. There may be limitations which make it technically infeasible for segments of sidewalks or trails to achieve full accessibility within the scope of any project. Those limitations will be noted and those segments will remain on the transition plan. As future projects or opportunities arise, those segments shall continue to be incorporated into future work. Regardless on if full compliance can be achieved or not, every sidewalk or trail shall be made as compliant as possible in accordance with the judgment of County staff.

OTHER POLICIES, PRACTICES AND PROGRAMS

Policies, practices and programs not identified in this document will follow the applicable ADA standards.

DESIGN STANDARDS

Grant County has PROWAG, as adopted by the Minnesota Department of Transportation (MnDOT), as its design standard. A copy of this document can be found at <http://www.dot.state.mn.us/ada/design.html>.

APPENDIX G – GLOSSARY OF TERMS

ABA: See Architectural Barriers Act.

ADA: See Americans with Disabilities Act.

ADA Transition Plan: Mn/DOT's transportation system plan that identifies accessibility needs, the process to fully integrate accessibility improvements into the Statewide Transportation Improvement Program (STIP), and ensures all transportation facilities, services, programs, and activities are accessible to all individuals.

ADAAG: See Americans with Disabilities Act Accessibility Guidelines.

Accessible: A facility that provides access to people with disabilities using the design requirements of the ADA.

Accessible Pedestrian Signal (APS): A device that communicates information about the WALK phase in audible and vibrotactile formats.

Alteration: A change to a facility in the public right-of-way that affects or could affect access, circulation, or use. An alteration must not decrease or have the effect of decreasing the accessibility of a facility or an accessible connection to an adjacent building or site.

Americans with Disabilities Act (ADA): The Americans with Disabilities Act; Civil rights legislation passed in 1990 and effective July 1992. The ADA sets design guidelines for accessibility to public facilities, including sidewalks and trails, by individuals with disabilities.

Americans with Disabilities Act Accessibility Guidelines (ADAAG): contains scoping and technical requirements for accessibility to buildings and public facilities by individuals with disabilities under the Americans with Disabilities Act (ADA) of 1990.

APS: See Accessible Pedestrian Signal.

Architectural Barriers Act (ABA): Federal law that requires facilities designed, built, altered or leased with Federal funds to be accessible. The Architectural Barriers Act marks one of the first efforts to ensure access to the built environment.

Capital Improvement Program (CIP): The CIP for the Transportation Department includes an annual capital budget and a five-year plan for funding the new construction and reconstruction projects on the county's transportation system.

Detectable Warning: A surface feature of truncated domes, built in or applied to the walking surface to indicate an upcoming change from pedestrian to vehicular way.

DOJ: See United States Department of Justice

Federal Highway Administration (FHWA): A branch of the US Department of Transportation that administers the federal-aid Highway Program, providing financial assistance to states to construct and improve highways, urban and rural roads, and bridges.

FHWA: See Federal Highway Administration

Pedestrian Access Route (PAR): A continuous and unobstructed walkway within a pedestrian circulation path that provides accessibility.

Pedestrian Circulation Route (PCR): A prepared exterior or interior way of passage provided for pedestrian travel.

PROWAG: An acronym for the *Guidelines for Accessible Public Rights-of-Way* issued in 2005 by the U. S. Access Board. This guidance addresses roadway design practices, slope, and terrain related to pedestrian access to walkways and streets, including crosswalks, curb ramps, street furnishings, pedestrian signals, parking, and other components of public rights-of-way.

Right of Way: A general term denoting land, property, or interest therein, usually in a strip, acquired for the network of streets, sidewalks, and trails creating public pedestrian access within a public entity's jurisdictional limits.

Section 504: The section of the Rehabilitation Act that prohibits discrimination by any program or activity conducted by the federal government.

Uniform Accessibility Standards (UFAS): Accessibility standards that all federal agencies are required to meet; includes scoping and technical specifications.

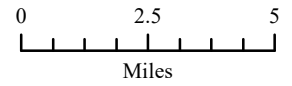
United States Access Board: An independent federal agency that develops and maintains design criteria for buildings and other improvements, transit vehicles, telecommunications equipment, and electronic and information technology. It also enforces accessibility standards that cover federally funded facilities.

United States Department of Justice (DOJ): The United States Department of Justice (often referred to as the Justice Department or DOJ), is the United States federal executive department responsible for the enforcement of the law and administration of justice.

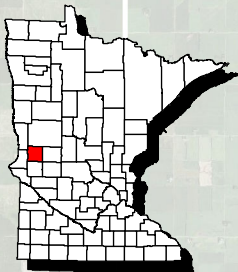
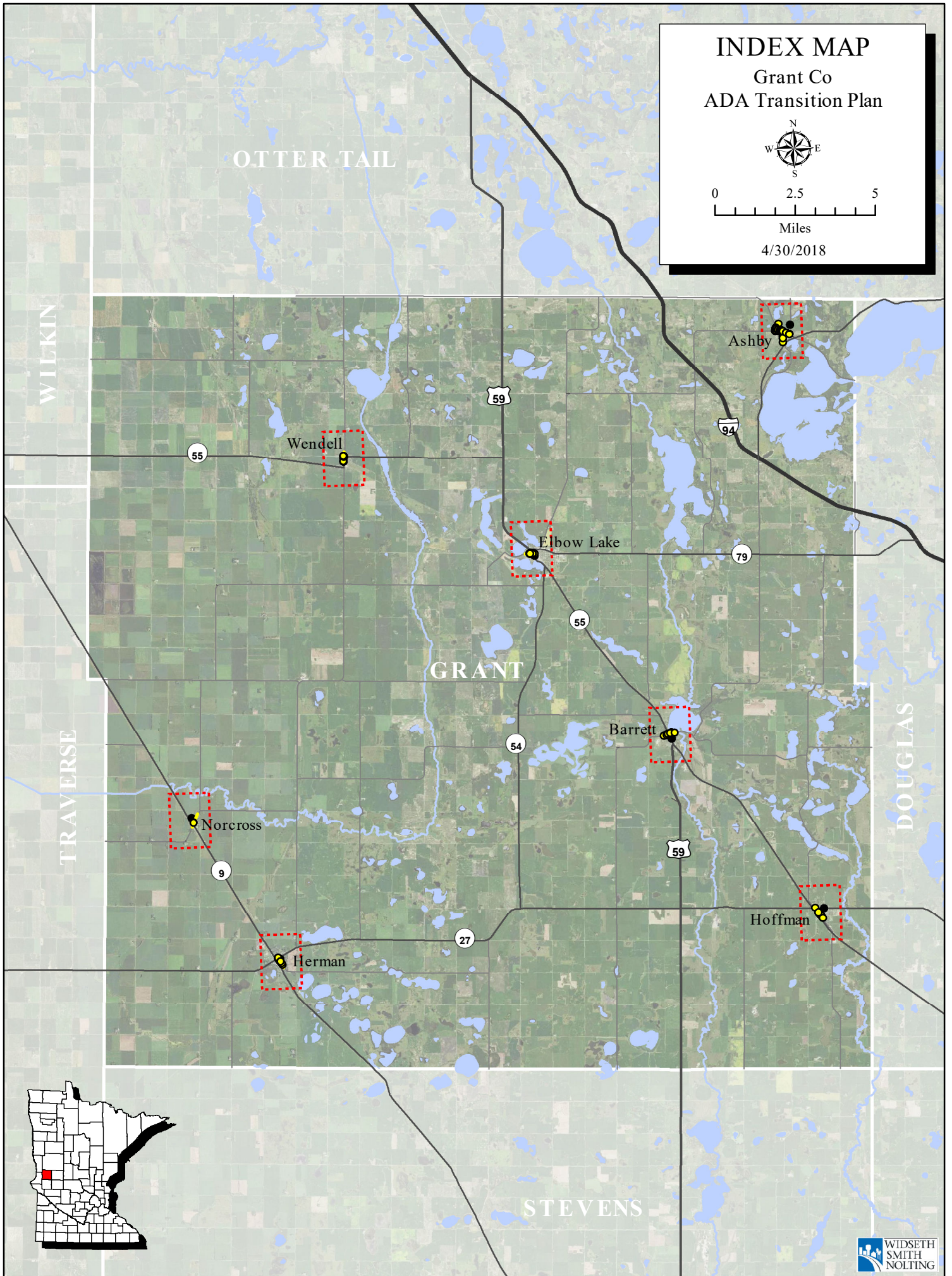
APPENDIX H – RATING MAPS

INDEX MAP

Grant Co ADA Transition Plan



4/30/2018



ASHBY

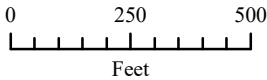
Grant Co ADA Transition Plan

Pedestrian Ramp

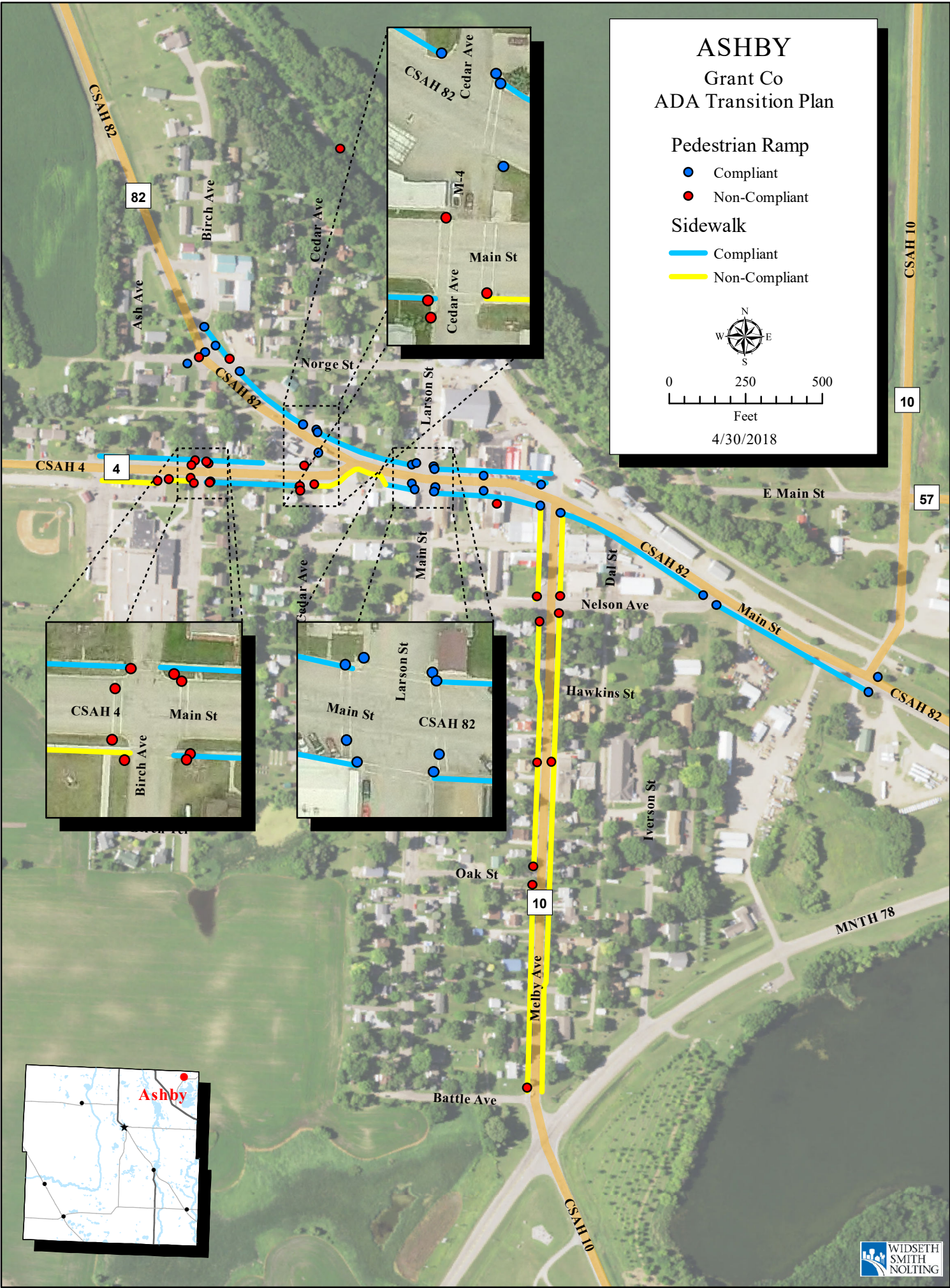
- Compliant
- Non-Compliant

Sidewalk

- Compliant
- Non-Compliant



4/30/2018



BARRETT

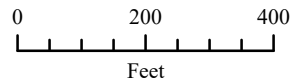
Grant Co
ADA Transition Plan

Pedestrian Ramp

- Compliant
- Non-Compliant

Sidewalk

- Compliant
- Non-Compliant



4/30/2018



ELBOW LAKE

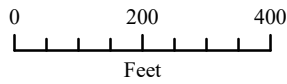
Grant Co ADA Transition Plan

Pedestrian Ramp

- Compliant
- Non-Compliant

Sidewalk

- Compliant
- Non-Compliant



7/23/2019



Elbow
Lake

ELK LAKE TRAIL

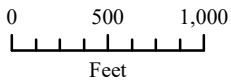
Grant Co
ADA Transition Plan

Pedestrian Ramp

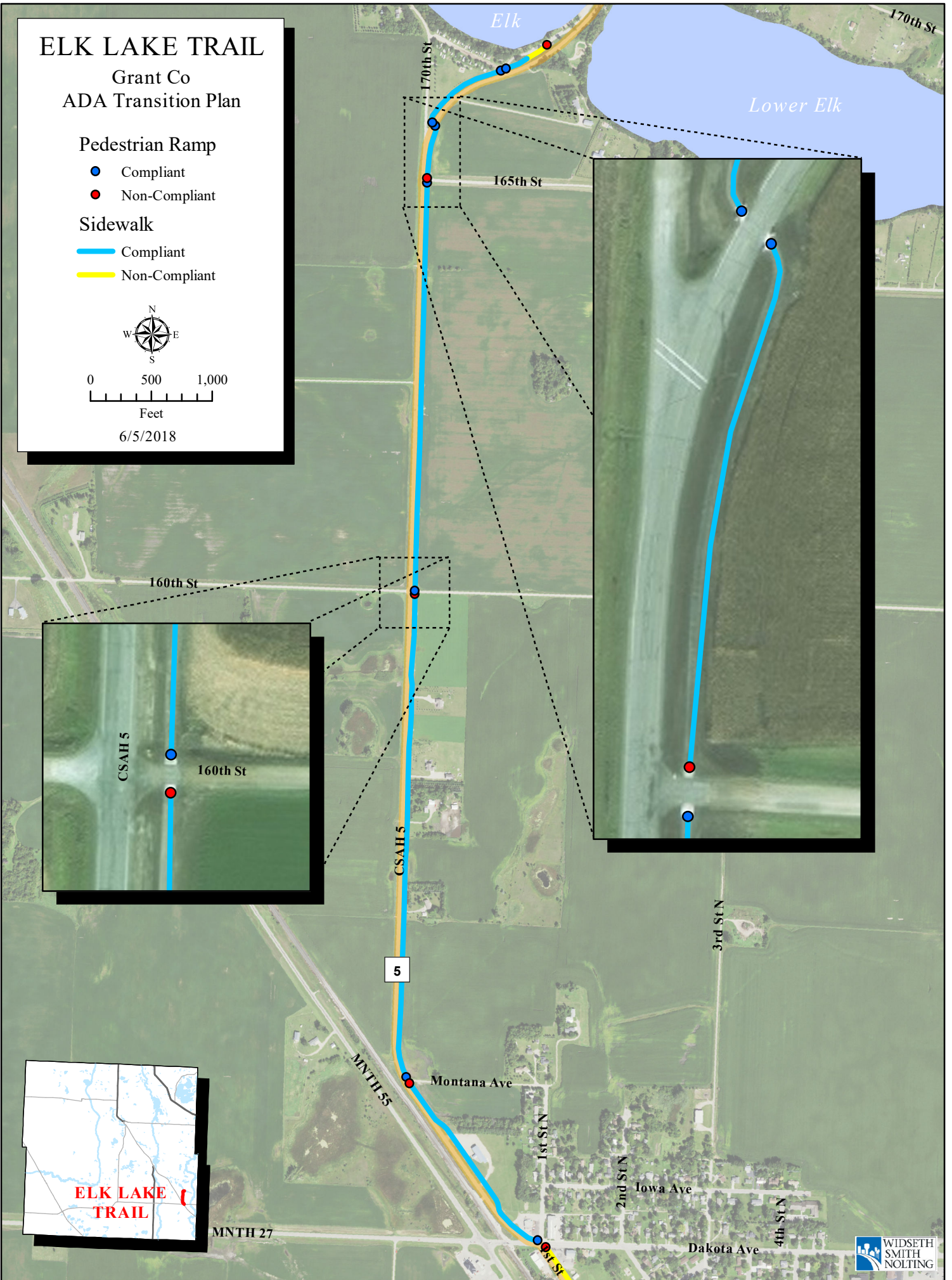
- Compliant
- Non-Compliant

Sidewalk

- Compliant
- Non-Compliant



6/5/2018



HERMAN

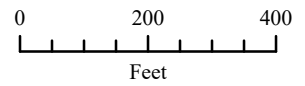
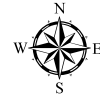
Grant Co
ADA Transition Plan

Pedestrian Ramp

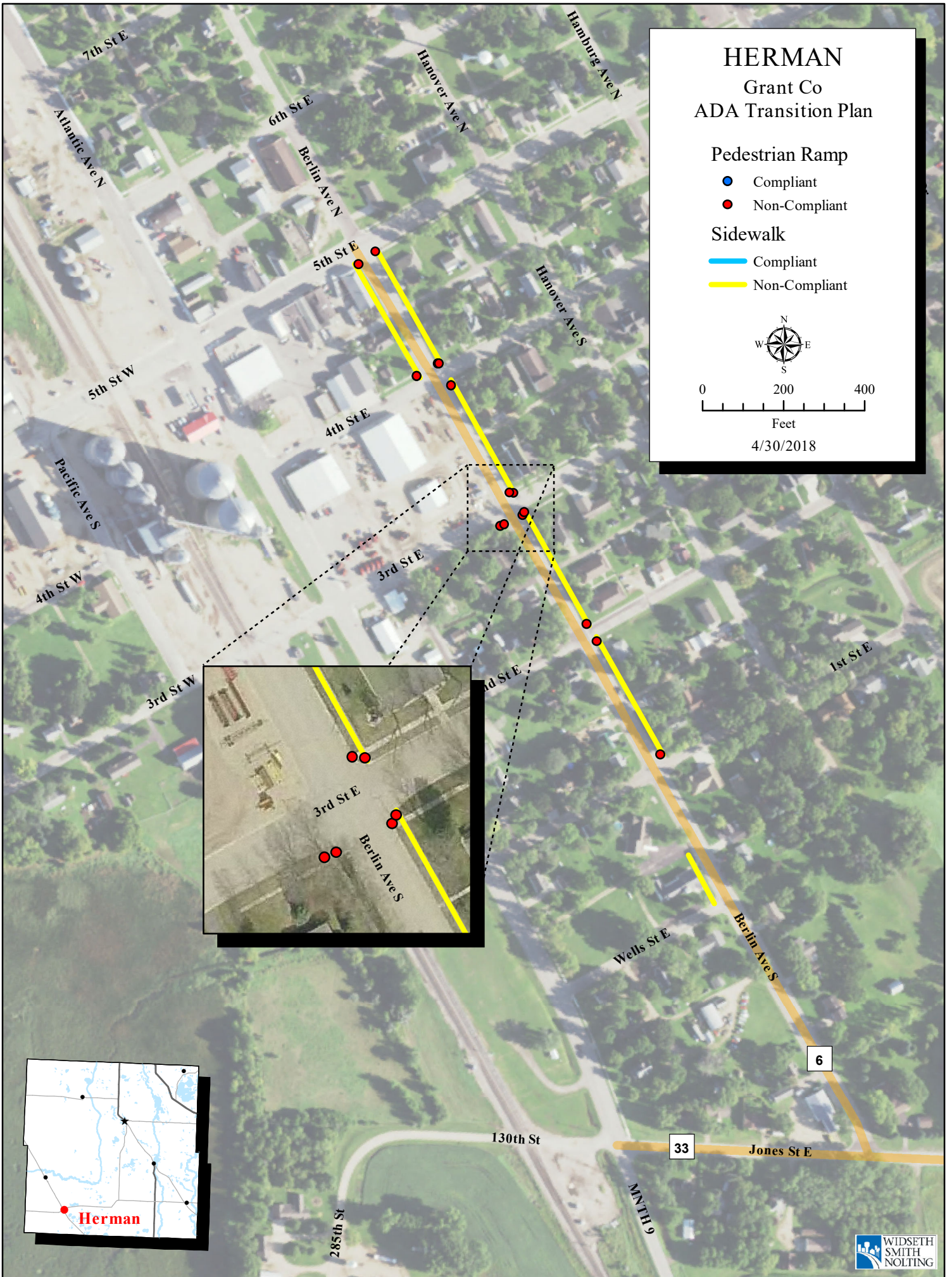
- Compliant
- Non-Compliant

Sidewalk

- Compliant
- Non-Compliant



4/30/2018



HOFFMAN

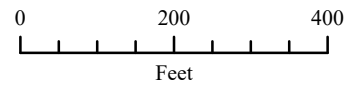
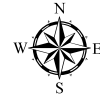
Grant Co
ADA Transition Plan

Pedestrian Ramp

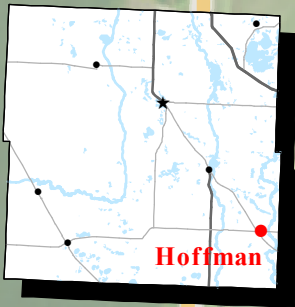
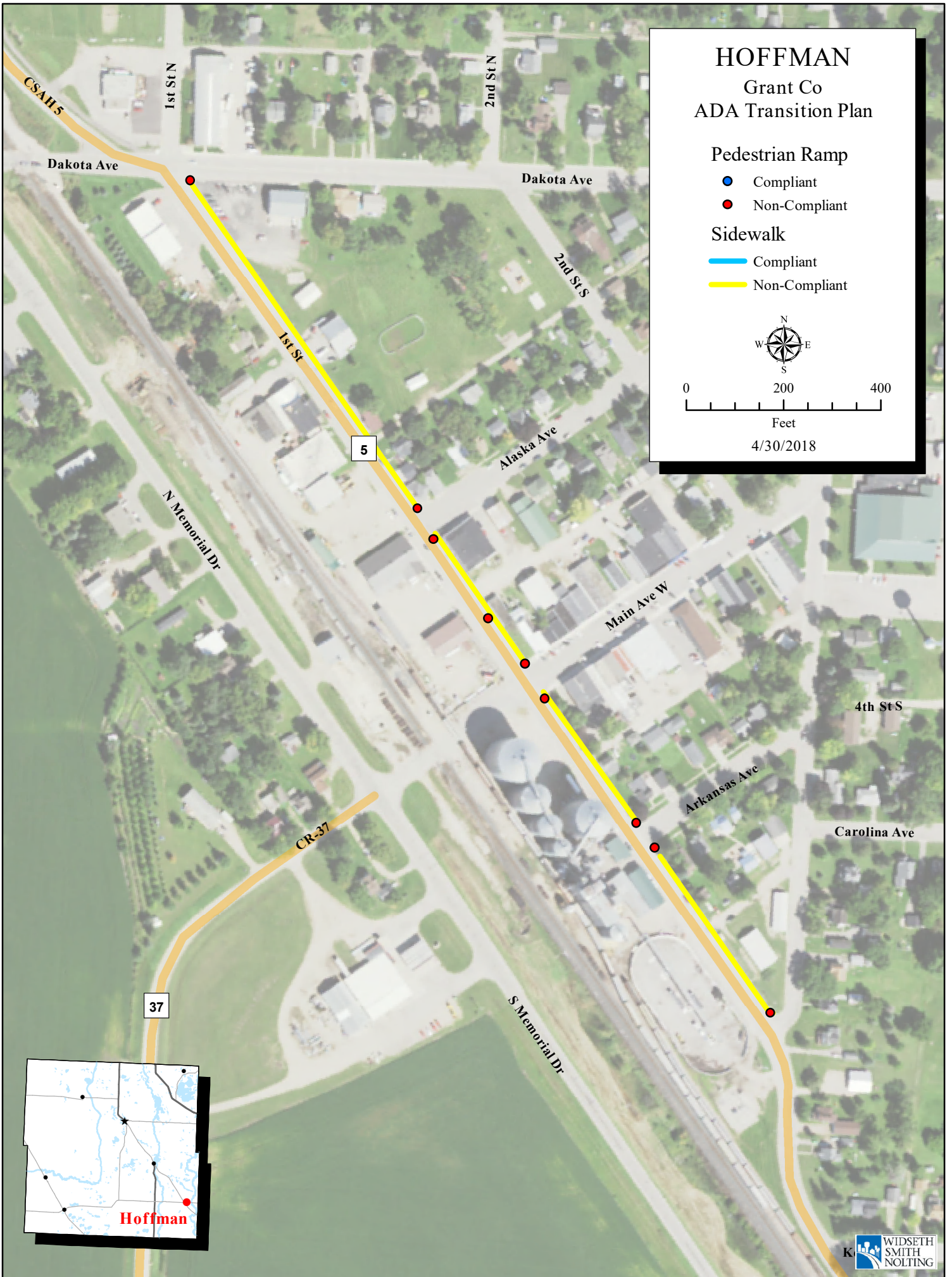
- Compliant
- Non-Compliant

Sidewalk

- Compliant
- Non-Compliant



4/30/2018



NORCROSS

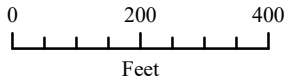
Grant Co
ADA Transition Plan

Pedestrian Ramp

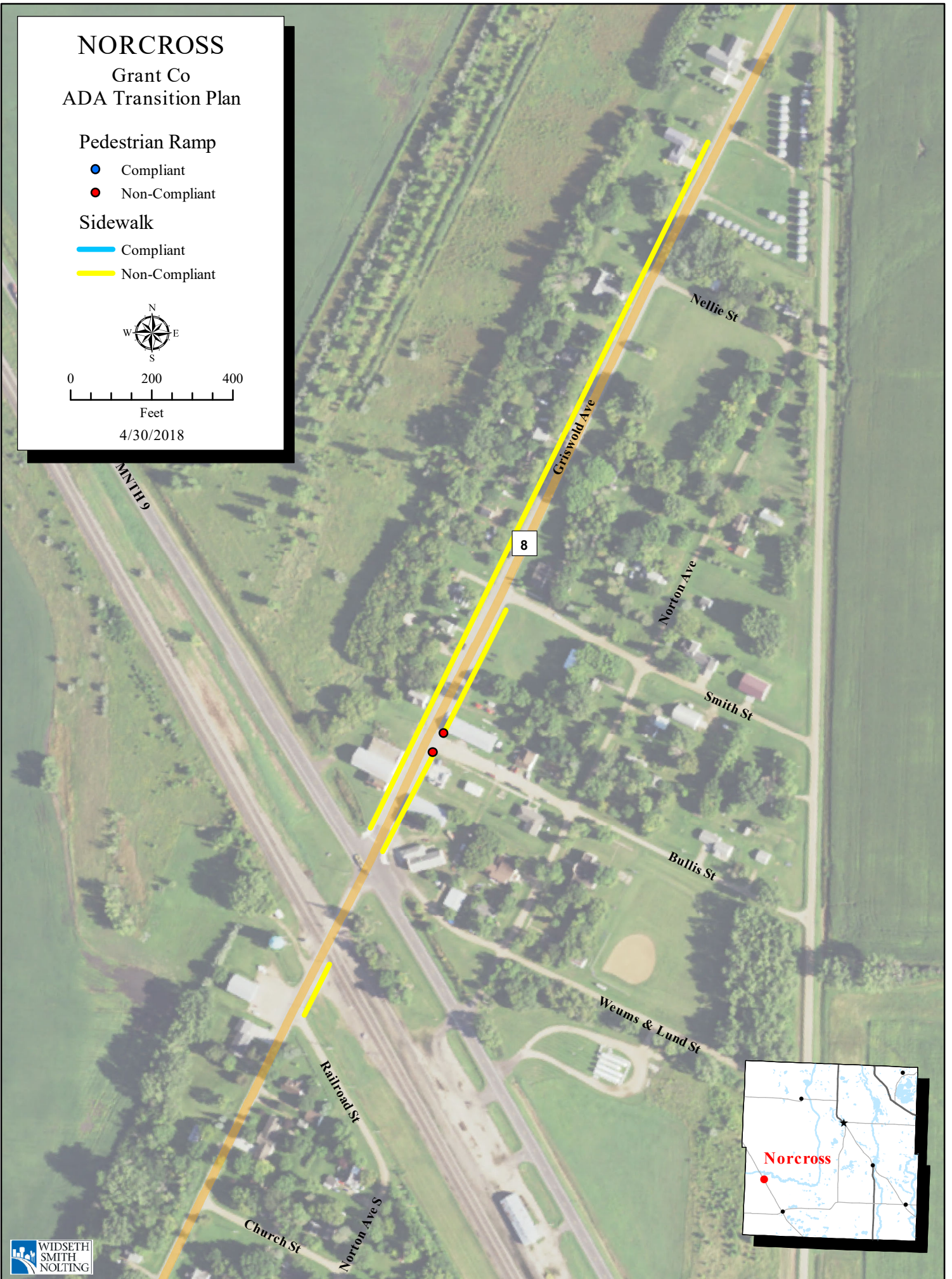
- Compliant
- Non-Compliant

Sidewalk

- Compliant
- Non-Compliant



4/30/2018



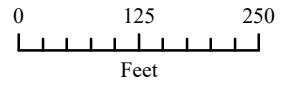
WENDELL Grant Co ADA Transition Plan

Pedestrian Ramp

- Compliant
- Non-Compliant

Sidewalk

- Compliant
- Non-Compliant



4/30/2018

